

COLORS


Build - A - Word



This is a yellow duck.

yellow

y e l l o w



This is pink flamingo.

pink

p i n k



© The Children's Museum 2017

Colors

Build - a - Word

Name: _____

Hello

Thank you for downloading this product. I am glad that you like this product and is valuable to you. It motivates me to work harder when you leave your feedback. Please do leave you feedback.

Printing Tip: Print on A4 size sheet. If not A4 than kindly click the option fit to size and print.

Illustrations:

www.teacherspayteachers.com/Store/Kari-Bolt-Clip-Art
www.teacherspayteachers.com/Store/Zip-a-dee-doo-dah-Designs
www.teacherspayteachers.com/Store/Dancing-Crayon-Designs

Fonts:

www.teacherspayteachers.com/Store/Kimberly-Geswein-Fonts

Write to me: childrensmuseum15@gmail.com

Stay connected with me:



Copyright © 2017 - 18 by The Children's Museum. All rights reserved to author

Purchase this item entitles purchaser to use it for personal or classroom use. Duplication for other class & commercial use is strictly prohibited. Minor changes can be made for personal use however the document remains titled under author's copyright even when edited. Posting the document on Internet as yours is strictly prohibited and would violating the Digital Millennium Copyright Act (DMCA). Please be fair and don't share.

Colors Included:

red - crab

orange - goldfish

black - spider

yellow - duck

green - frog

pink - flamingo

grey - dolphin

brown - horse

blue - whale

white - sheep

© The Children's Museum 2017

Colors

Build - a - Word

Name: _____

© The Children's Museum 2017

Colors

Build - a - Word

Name: _____

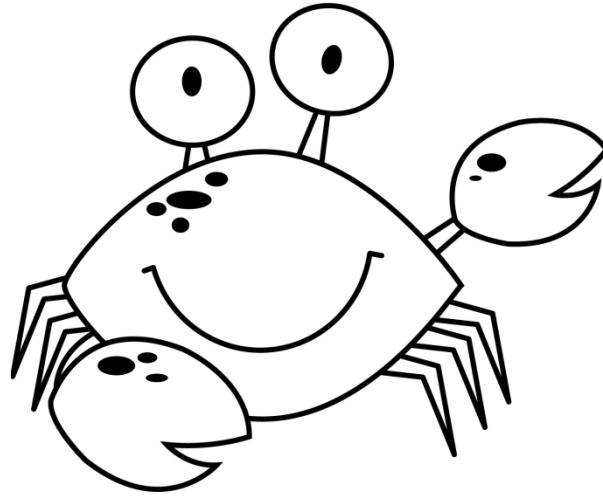
A rectangular box containing four sets of horizontal lines for handwriting practice. Each set consists of a solid top line, a dashed middle line, and a solid bottom line. A vertical line on the left side of the box indicates a margin.

A second rectangular box, identical to the first, containing four sets of horizontal lines for handwriting practice. Each set consists of a solid top line, a dashed middle line, and a solid bottom line. A vertical line on the left side of the box indicates a margin.

This is red crab.

red

--	--	--



e

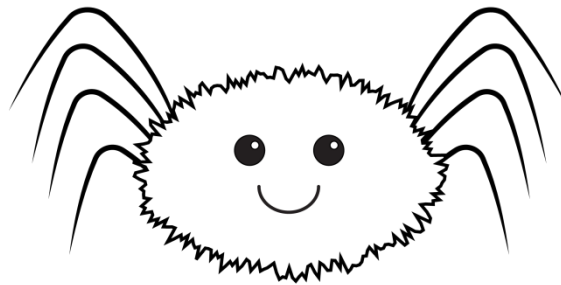
a

r

The black spider.

black

--	--	--	--	--



b

a

k

l

c